



Jelgava, JSC Latvia's State Forests





LATVIJAS VALSTS MEŽI

KOKSNE · STĀDI · ATPŪTA

Sustainability in JSC Latvia`s State Forests (LVM)



Renāte Ribaka

Communication specialist



Nora Šukīte

Sustainability manager

JSC «Latvia's State Forests» (LVM)



Founded in **1999**



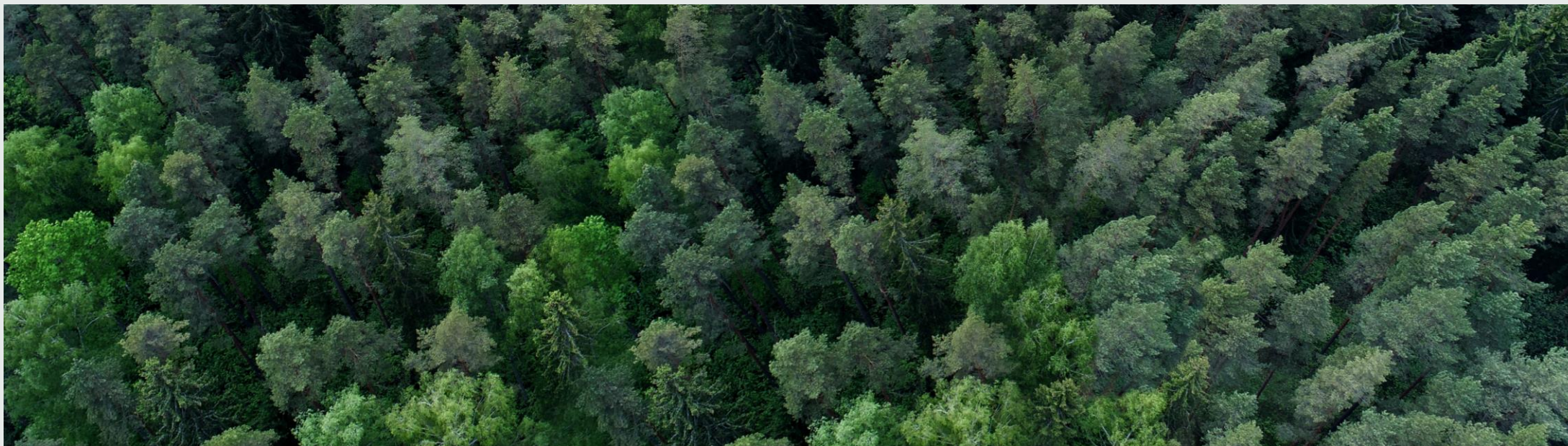
LVM pursue state interests in forestry by sustaining and increasing the forest value, while gaining maximum possible value from forest management



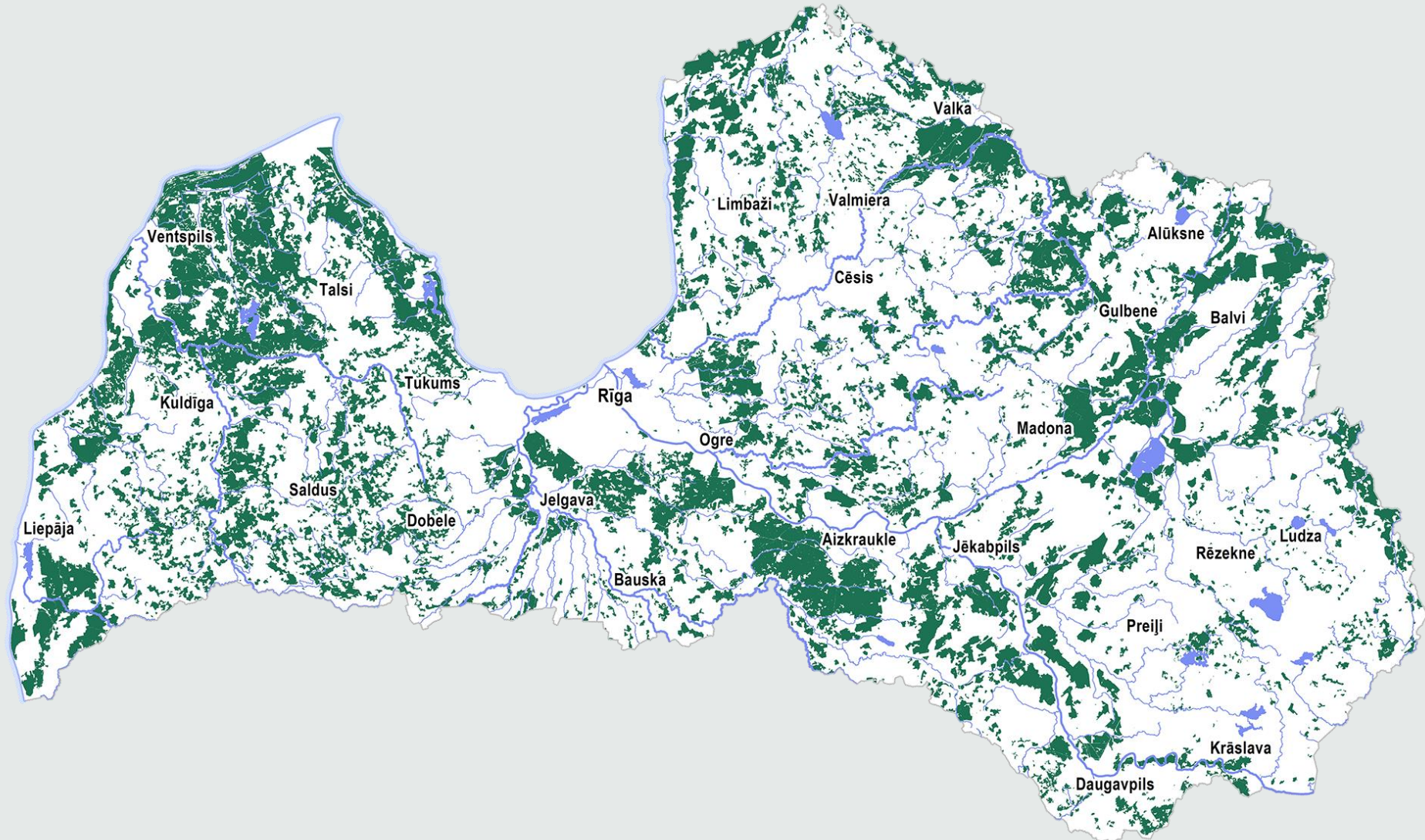
~ **1 475** employees



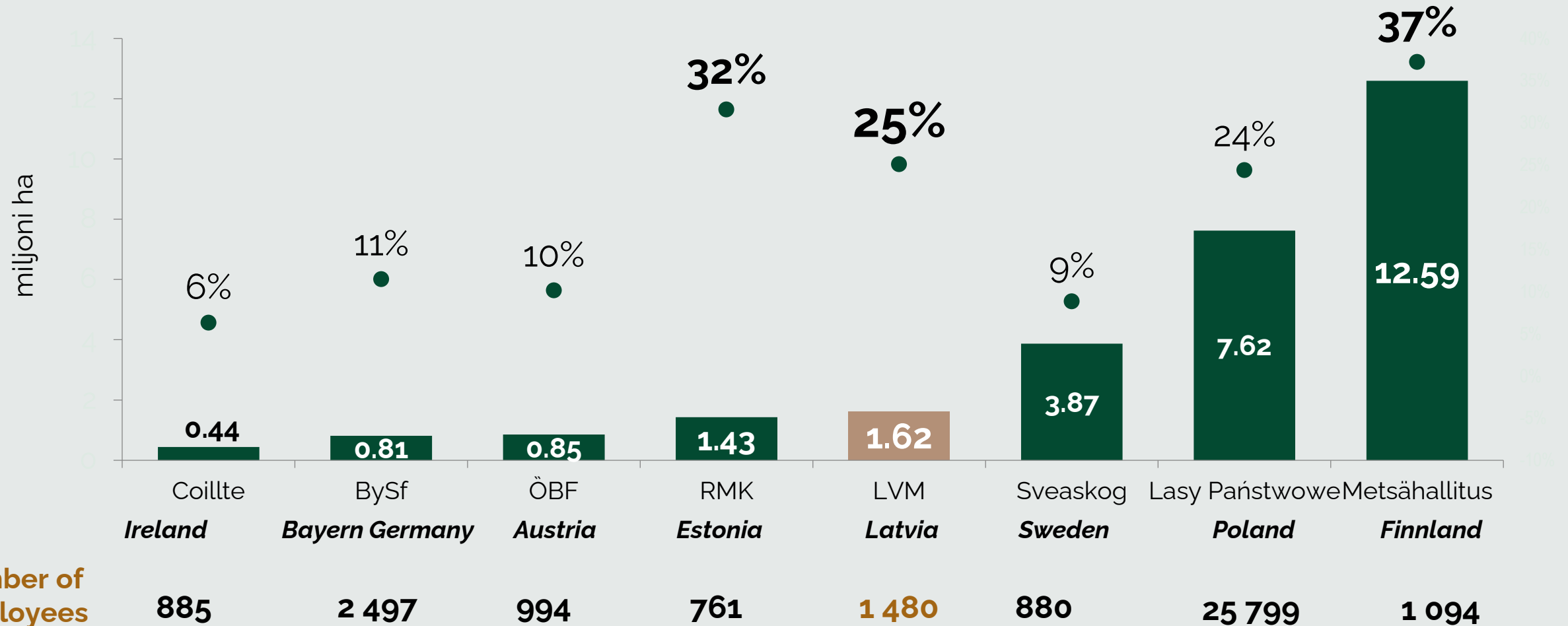
One of the Baltic's leader in efficient and innovative forestry



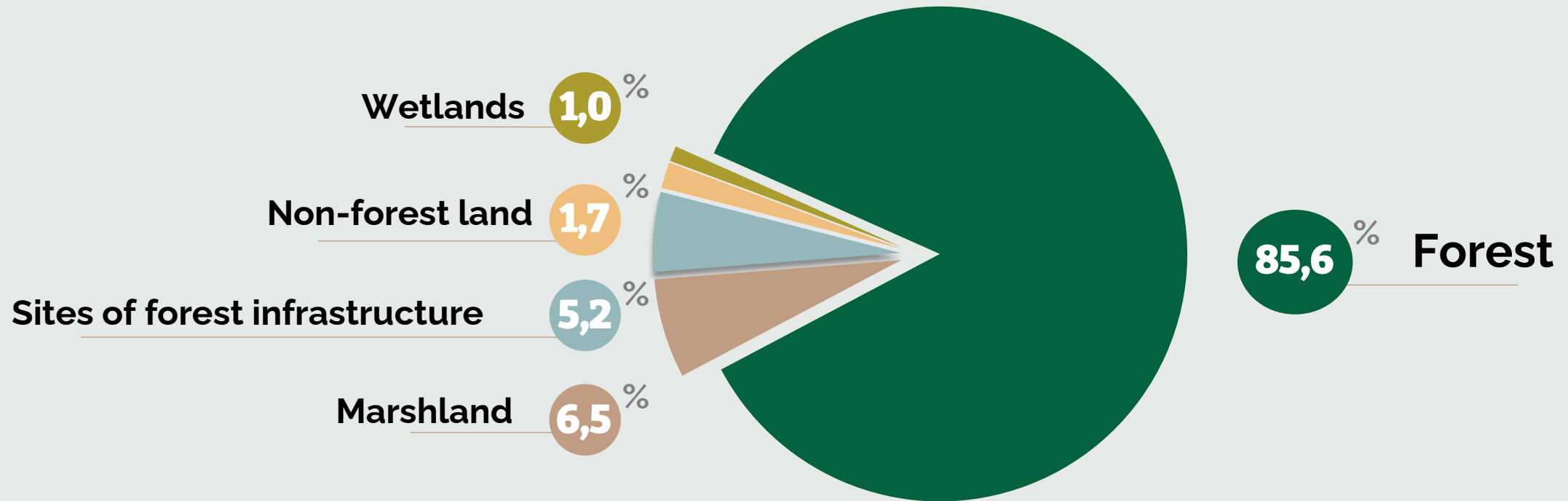
LVM forests



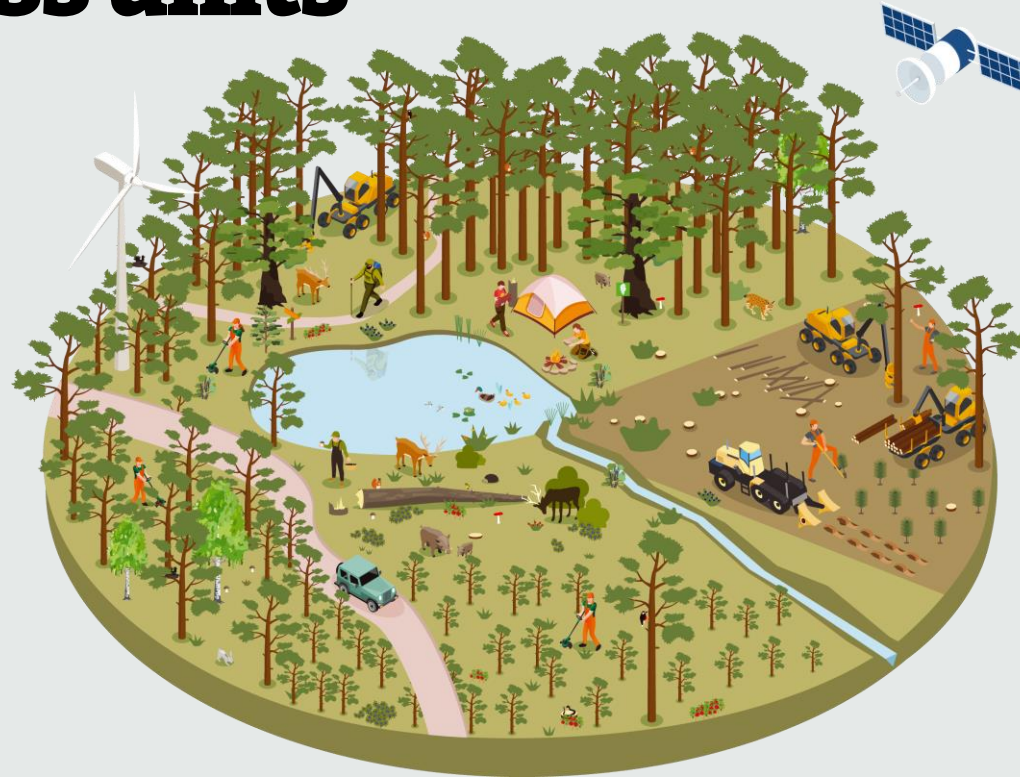
The area under management and share from the total area of the country



LVM area under management



LVM business units



LVM Seeds & Plants

1,3 %

LVM Forestry

Silviculture

Roundwood production and supply

Forest infrastructure

97,3 %

LVM Recreation & hunting

0,2 %

LVM Construction minerals

1,0 %

LVM Business systems solutions

0,1 %

LVM products and services

Supply of wood assortments

LVM delivers to its customers sawlogs, veneer logs, industrial wood, pulpwood and fuelwood. Sawlogs and veneer logs are supplied to woodworking enterprises in Latvia. Other assortments are sold following the FOB provisions.



Supply of fuel chips

LVM supplies fuel chips to produce green energy in Latvia and abroad.



Seeds and plants

LVM produces forest tree seeds and seedlings, as well as ornamental tree seedlings.



Services in recreation and hunting

LVM at its recreation sites offers recreation services – licensed angling, crayfish catching as well as hunting for locals as well as foreign customers in its managed forests.



Mineral resources

LVM offers sand, gravel, as well as peat extraction. The customers of sand and gravel are road construction companies, who carry out construction activities in forests and public highways.



Business System Solutions LVM GEO

Information system platform and derived tools work with any form of data and can be adjusted to the needs of different industries' companies – forest management, real estate, communication infrastructure, monitoring of natural process, providing services and other areas.



Three light-colored wooden blocks are arranged in a row on a patch of green grass. Each block has a large black letter on its top face and a corresponding word in smaller black capital letters on its front face. The background is a soft, out-of-focus green field.

E

ENVIRONMENTAL

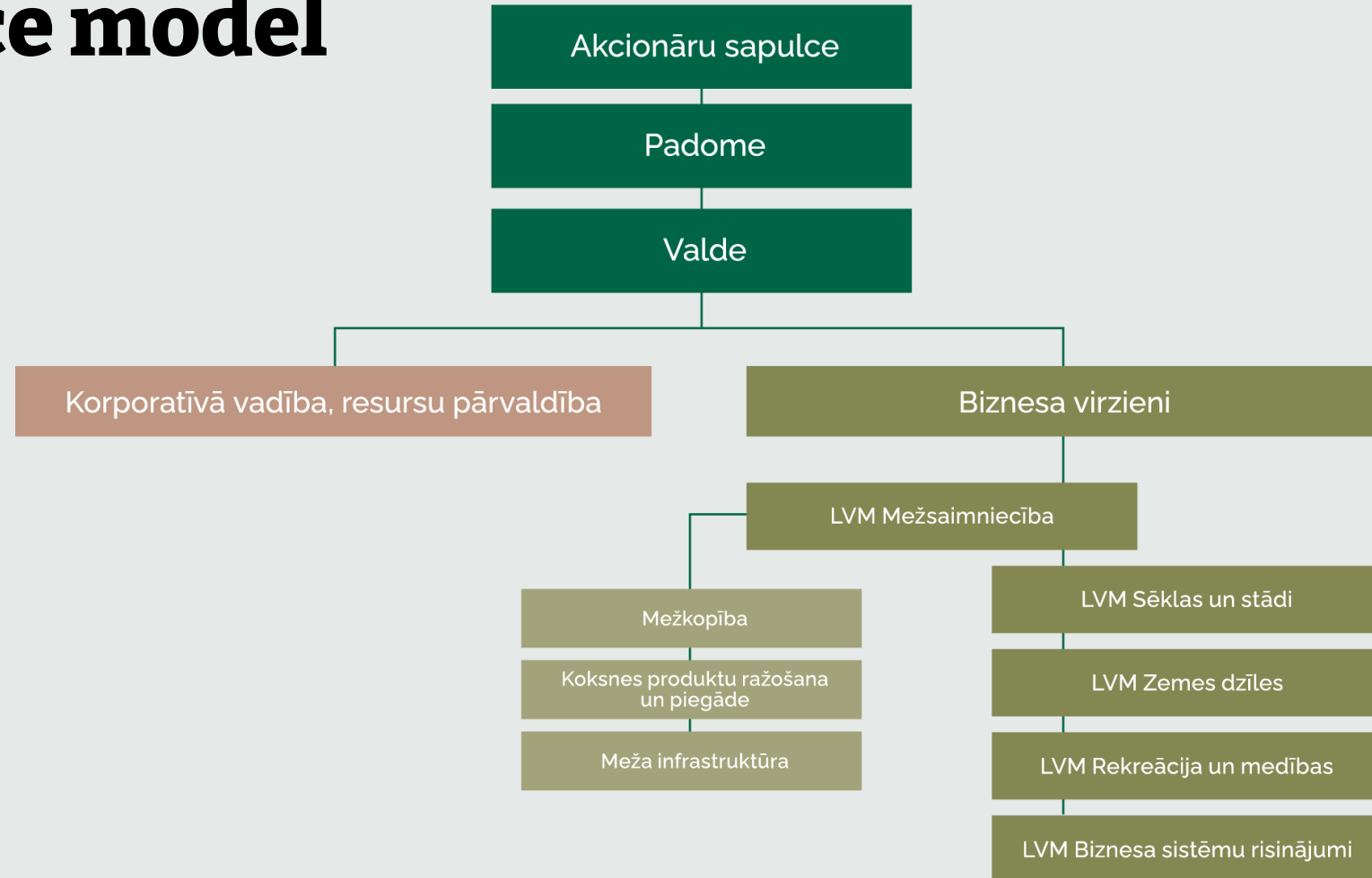
S

SOCIAL

G

GOVERNANCE

Governance model



Saistītie uzņēmumi

SIA "Jaunmoku pils" | 100 %

SIA "Meža un koksnes produktu pētniecības un attīstības institūts" | 40,22 %

Governance – Council / Supervisory Board



Zane Driņķe, Chairwoman of the Council



Mārtiņš Līdums, Vice-Chairman of the Council



Sintija Ķikste, a member of the Council

Governance – Management Board



Pēters Putniņš,
Chairman of the
Management Board



Māris Kuzmins, a
member of the
Management
Board



Inga Vagele, a
member of the
Management
Board



**Dagnis
Dubrovskis,** a
member of the
Management
Board



Janis Krūmiņš, a
member of the
Management
Board

Why governance is very important?

- Team;
- Communication;
- Transparency;
- Equality of decisions;
- Open data;
- Zero tolerance to corruption;
- Etc.



Strategic goals

- We will implement **sustainable business operations** and enhance the competitiveness of product supply chains;
- We will **raise the value of natural capital**;
- We will develop a stimulating and inclusive **work environment**.



Forestry planning principles

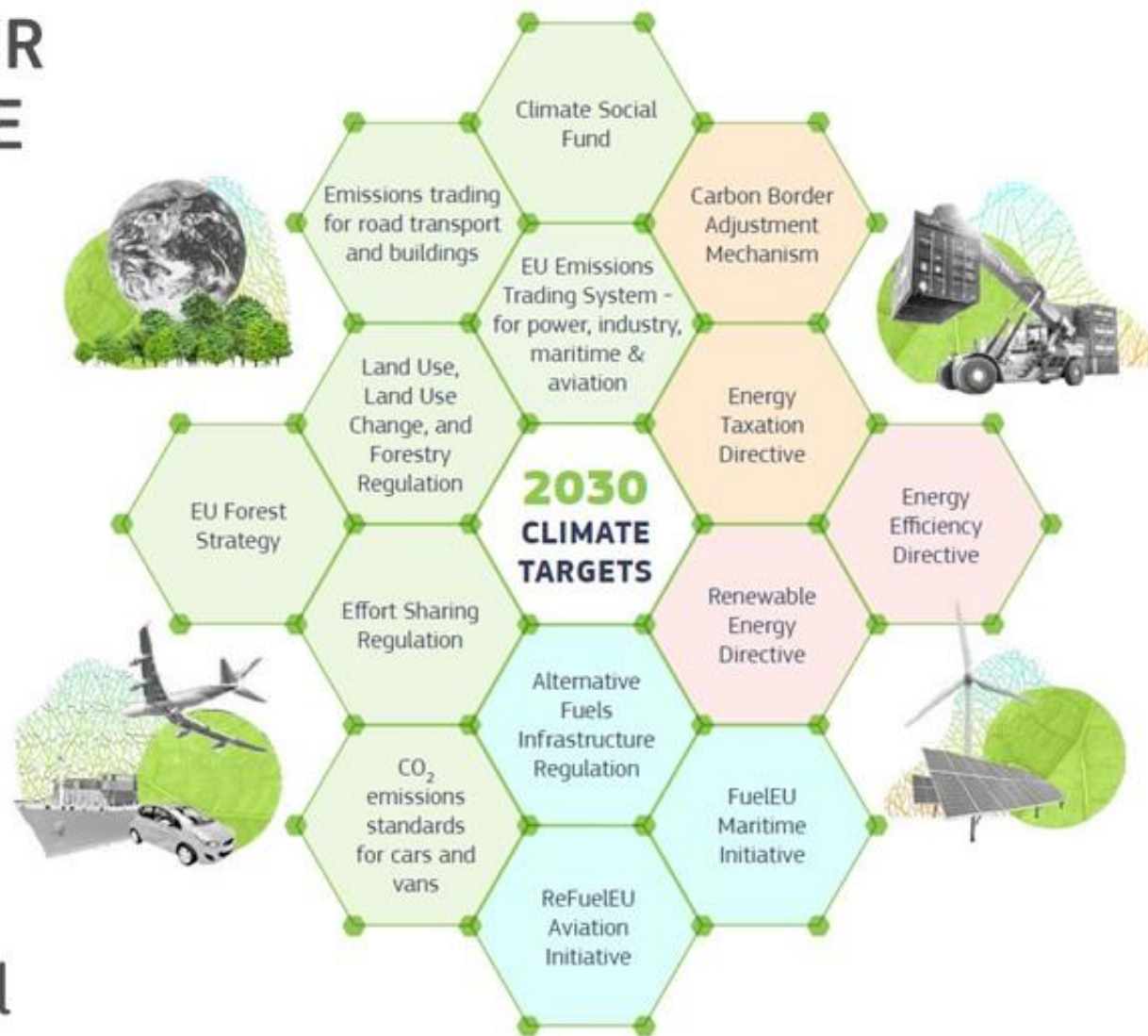


A young pine tree stands in the center of a lush green forest. The background is filled with many other similar trees, creating a dense canopy. The lighting is soft, suggesting a slightly overcast day. The text is centered over the tree and is in a clean, white, sans-serif font.

Sustainability in LVM and future challenges

EUROPEAN GREEN DEAL

REACHING OUR 2030 CLIMATE TARGETS



#EUGreenDeal

EXPLAINER

ESG REGULATIONS

IN 2024

Everything you need to know about sustainability reporting regulations



CSRD & ESRS, CSR3D

Corporate Sustainability Reporting Directive and European Sustainability Reporting Standards - previously voluntary best practices will become legislation to achieve global sustainability goals;

Directive on corporate sustainability due diligence - companies identify and address adverse human rights and environmental impacts of their actions



ESRS

Cross-Cutting Standards	Environment	Social	Governance	Cover Note & Appendices	
General Principles	Climate Change	Own Workforce	Governance, risk management and internal control	Cover Note for public consultation	SFRD Principal Adverse Impacts in ESRS
General, strategy, governance and materiality assessment disclosure requirements	Pollution	Workers in the Value Chain	Workers in the Value Chain	Navigating the ESRS: ESRS Exposure Drafts / Disclosure Requirements, Application Guidance index	TCFD Recommendations and ESRS reconciliation table
	Water & Marine Resources	Affected communities		CSRD requirements for the development of sustainability reporting standards and their coverage by ESRS Exposure Drafts	IFRS Sustainability Standards and ESRS reconciliation table
	Biodiversity and ecosystem	Consumers and end-users			Acronyms and glossary of terms
	Resource Use and CE				

Value chain in CSRD

A **value chain** encompasses the activities, resources and relationships the undertaking uses and relies on to create its products or services from **conception to delivery, consumption and end-of-life**. Value chain includes actors **upstream** and **downstream** from the undertaking. Value chain also addresses global issues such as human rights, climate change and fair labour practice.

Where are we?



AS “Latvijas valsts meži” ilgtspējas pārskats

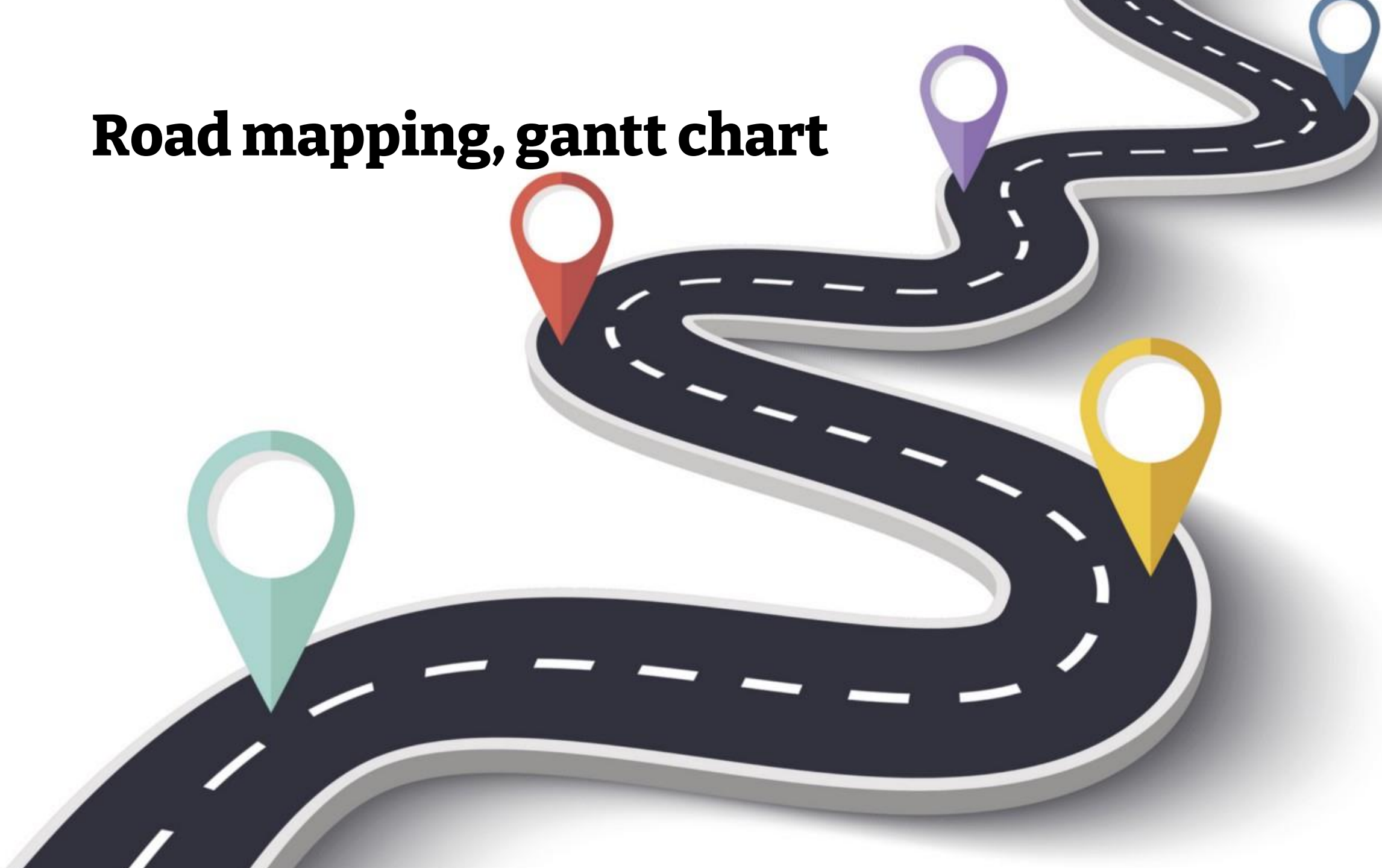
(konsolidētais nefinanšu paziņojums)
par 2023. gadu

GRI – Global reporting initiative standarts

Scarecrow?



Road mapping, gantt chart



Setting new targets



LVM being sustainable already for many years !

LATVIJAS VALSTS MEŽI

KOKSNE · STĀDI · ATPŪTA

Forestry planning

Strategic planning



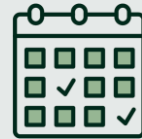
120 years
(by 10 years)

Tactical planning



10 (5+5) years

Yearly planning



1 year

Monthly planning



1 month

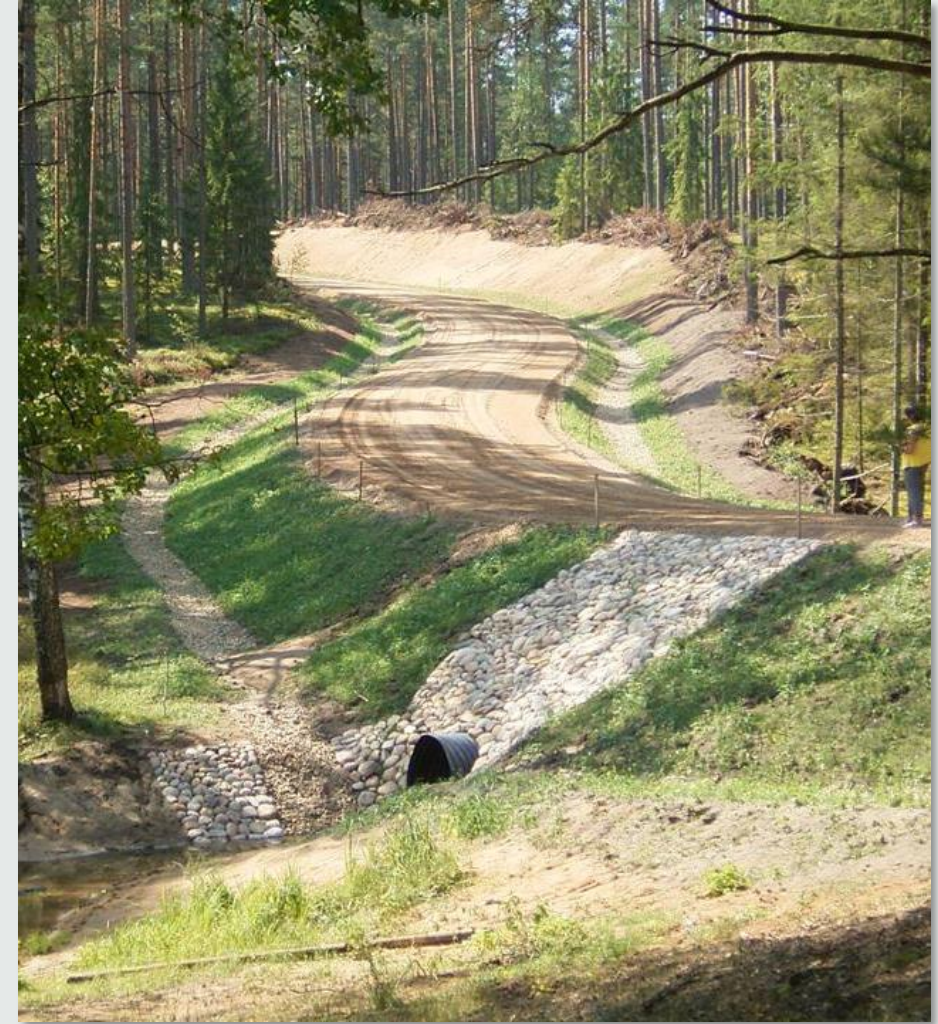
Operational tasks



Daily

Mitigating the environmental impacts of forestry operations

- 30 000 ha surveyed, assessed annually
 - Not planning works likely to have significant effects on the environment at the site
 - Annual work instructions prepared for mitigating environmental impacts:
 - Construction/reconstruction of forest roads – 260 pcs/330 km
 - Reconstruction/restoration of forest amelioration systems – 60 pcs/20 000 ha
 - In subsoil extraction sites
 - In logging sites
- *



Environment - nature conservation areas



The area of
nature
conservation
areas has
doubled in
20 years

Environment



Biotores of EU significance

358 000 ha
30 biotope types



Protected plants

67 000*
registrations



Protected invertebrates

2 800*
registrations



Nesting sites of protected bird species

2 500* nests
(D>50 cm)



Wood-grouse mating places

410* places
17 000*
observations
related to wood-
grouse

Management of habitats and biotopes of important species



Management of habitats and biotopes of important species

200-300 ha annually

- Within the framework of external co-financing of environmental projects: 700-800 ha per year

Objective – restoration and maintenance of grassland, marsh and forest biotopes:

- Creation, diversification of biotope-specific structures
- Restoration of the hydrological regime
- Controlling invasive species
- Improving the quality of habitats suitable for important species

*



Environmental projects

Participation in LIFE project “Implementation of Latvian river basin management plans to achieve good surface water status (2020-2028)” (LIFE GoodWater IP)

Implementation of the project “Management measures in specially protected natural areas and micro-reserves to improve the state of protection of habitats and species (2021-2023)” financed by the Cohesion Fund

Participation in implementation of the project “Optimising the Governance and Management of the Natura 2000 Protected Areas (2021-2028)” (LIFE LatViaNature IP)



NACIONĀLAIS
ATTĪSTĪBAS
PLĀNS 2020



EIROPAS SAVIENĪBA
Kohēzijas fonds

IEGULDĪJUMS TAVĀ NĀKOTNĒ



Valsts reģionālās
attīstības aģentūra

Protection of young stand



Repellents (sand – glue mix,
sheep fat mix, blood flour mix)



Fences

Protection of young stand



Pheromone traps – against eight-toothed spruce bark beetle



Protective spirals



Birdhouses



Laying of Temporary Forest Road

**After
Temporary
Forest Road**



A year later



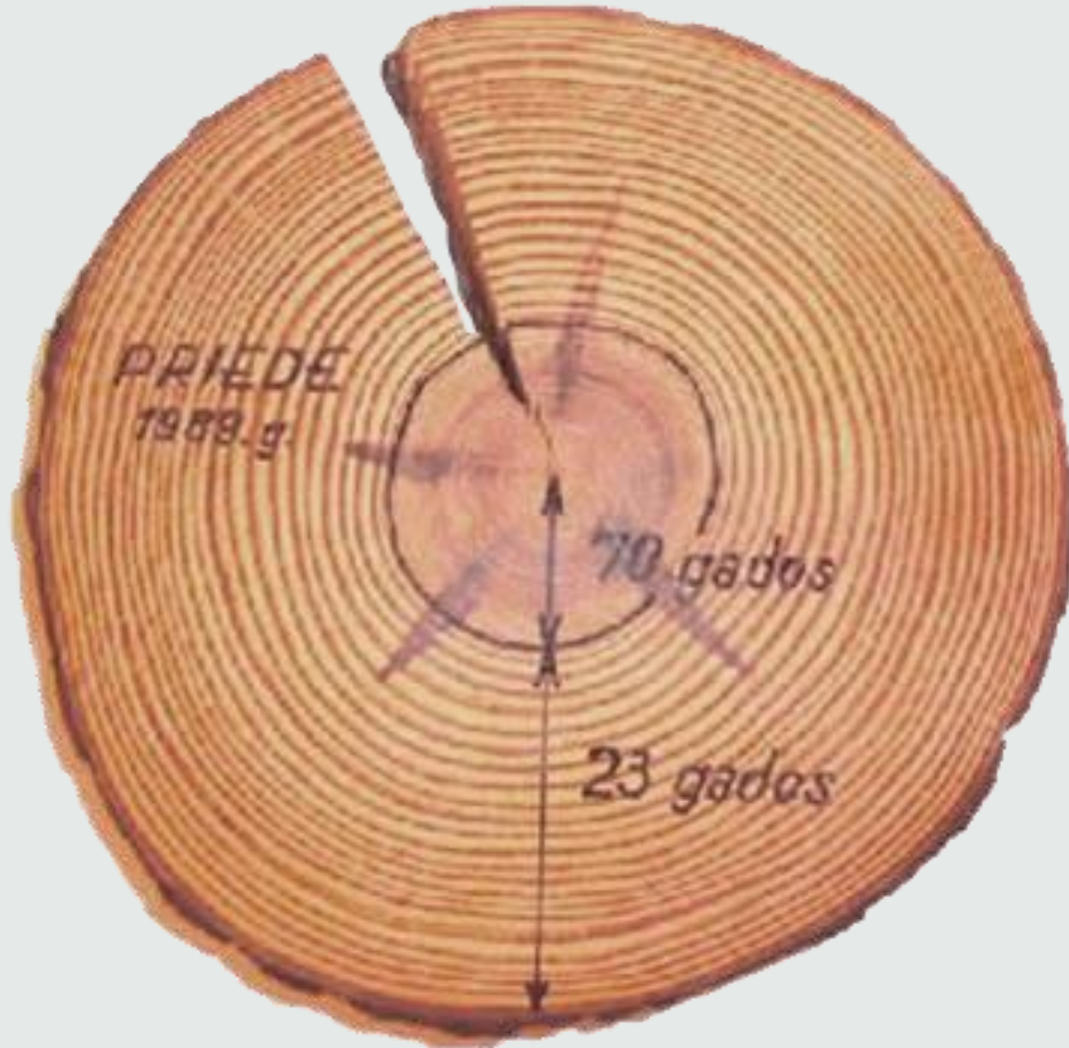
Forest Drainage Systems



Annual average of
restored forest
drainage systems
is
18.1
thous. ha

Restoration of land reclamation systems assures higher levels of wood increment and increases the competitiveness of the sector

Forest Drainage Systems



Carbon sequestration – LVM hand



Katru gadu pieaugot piesaista

4,1 milj.
tonnas oglekļa



Kopā glabā

123 milj.
tonnas oglekļa

Greenhouse gas emissions – LVM foot



1st Scope

Direct emissions

Fuel

Heating (wood pellets)

Gases (refridgerators etc.)

2nd Scope

Indirect emissions

Electricity

Heating (central)

3rd Scope

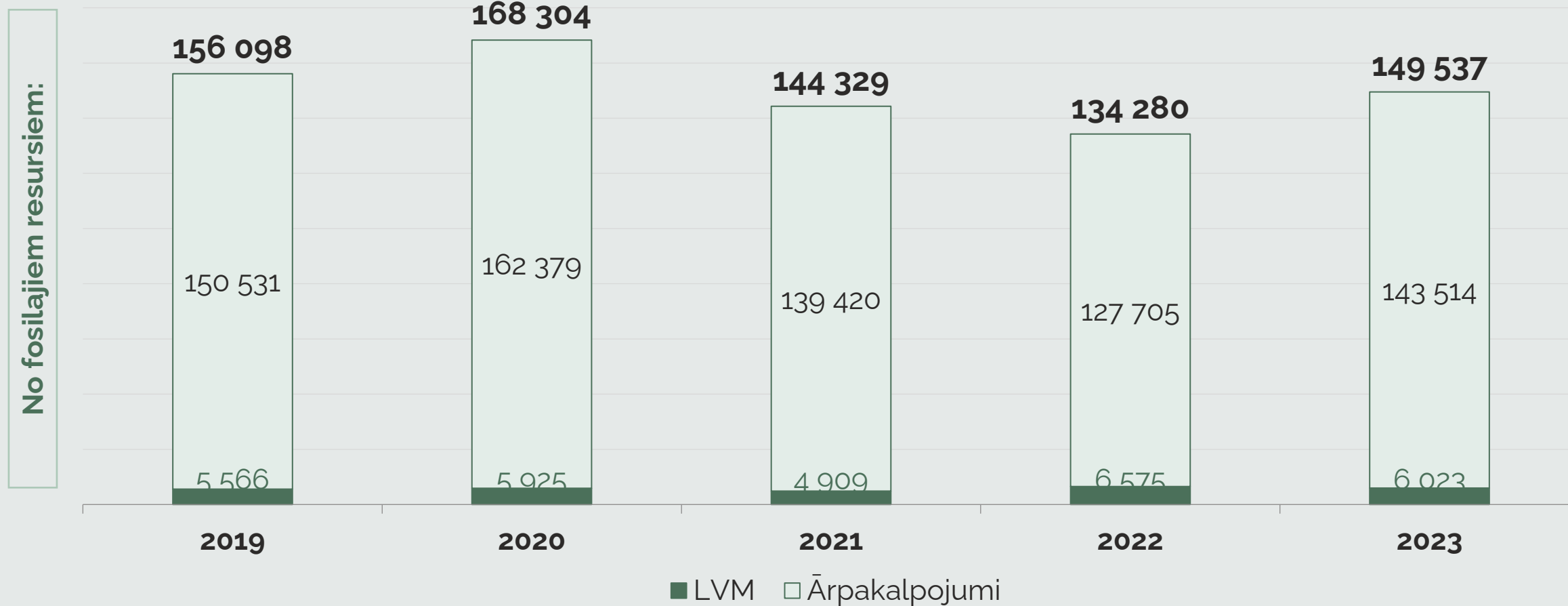
Indirect emissions

Fuel used by business partners

Business trips

The Greenhouse Gas Protocol. A Corporate Accounting and Reporting Standard. Saite: [ghg-protocol-revised.pdf](https://www.ghgprotocol.org) ([ghgprotocol.org](https://www.ghgprotocol.org))

Greenhouse gas emissions – LVM footprint



Stakeholders - own workforce

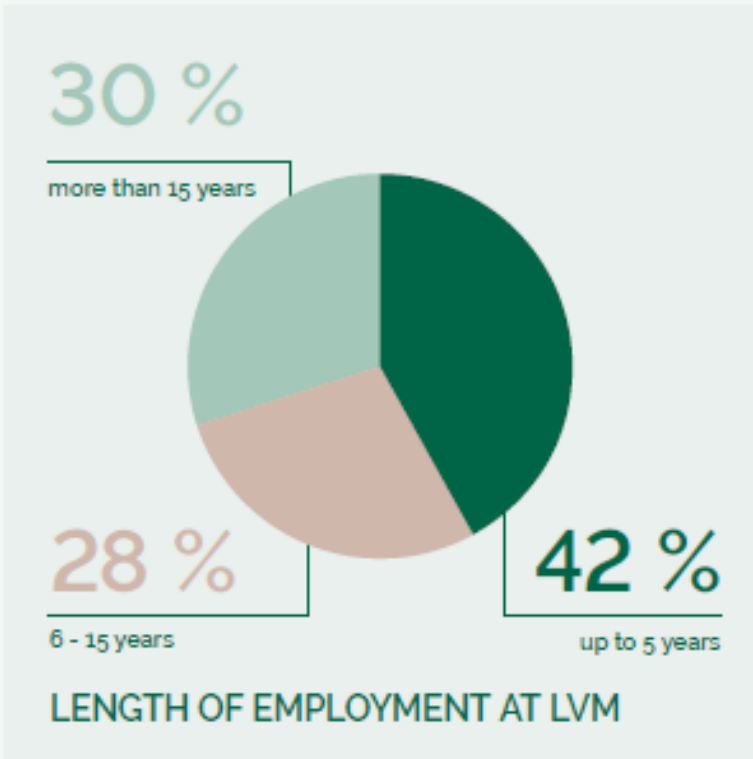
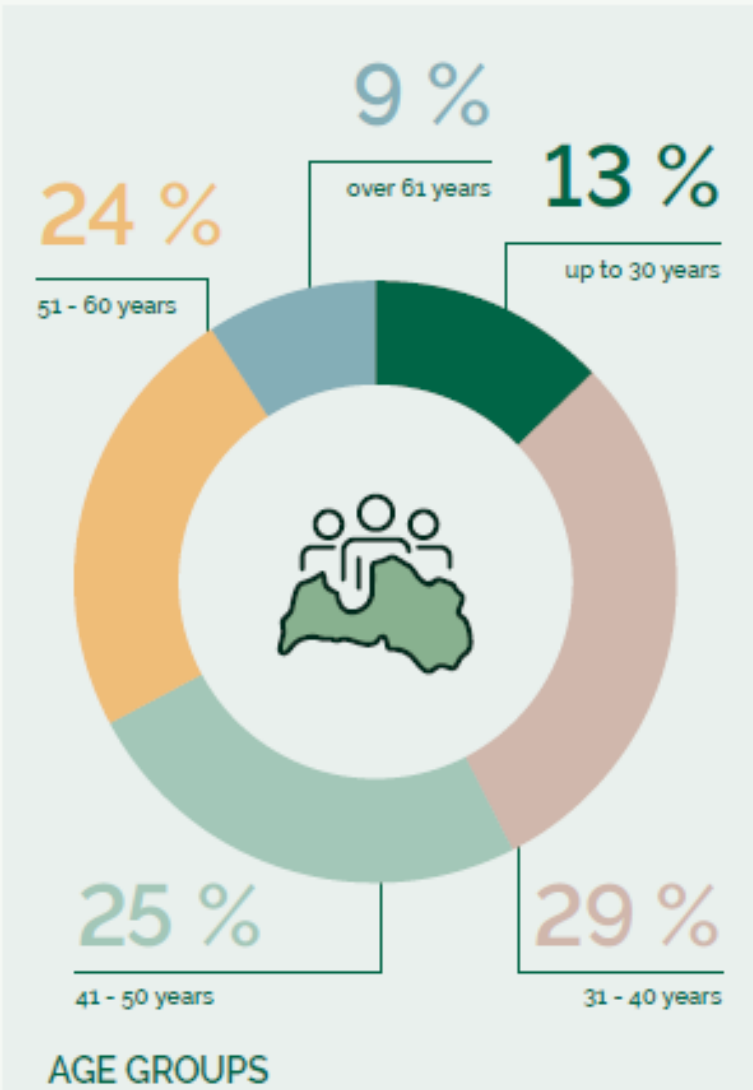


<https://www.youtube.com/watch?v=8SQqcstvB88>

Stakeholders - own workforce



Stakeholders - own workforce



Stakeholders - local community



Stakeholders – customers



Stakeholders – business partners and their workers - due diligence

https://www.youtube.com/watch?v=ctB_1uekVn8



Forest for people



What? Have you grown up in a forest or something?

LATVIJAS VALSTS MEŽI

KOKSNE · STĀDI · ATPŪTA





EKSPEDICIJAS
DARB
BURTNIC
MĒS, LAIPNĀI

MĒS

2018. gada 20. septembris
PASA
EKSPEDICIJA

Latvia's State Forests for schools

Nature is the best and most knowledgeable classroom

10 environmental education programmes skolam.lvm.lv

People who **ARE NOT AFRAID OF NATURE**, learn in and from it

Competence based education since 2005

20 000 students and teachers annually

More than 40 accredited learning materials

International experience

What, when, where?

Pre-schools	→	Pigman's detectives
Grade 1 to 9	→	Forest masterclass
6 th grade	→	Forest expeditions
8 th and 9 th grade	→	Experiments in the forest
Grade 10 to 12	→	Bioeconomy school
Universities	→	Scholarships
Teachers	→	Further education courses
Everyone	→	Oxygen or School forest



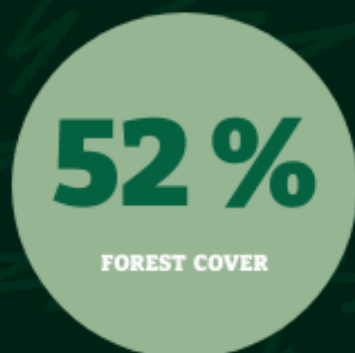
But it's not like I can go roaming around in any forest... Right?

LATVIJAS VALSTS MEŽI

KOKSNE · STĀDI · ATPŪTA

Actually, you can and are more than welcome to do so!

Latvia is one of the few countries where it's allowed to roam around in **ANY FOREST***, collect berries and mushrooms, and even light a fire and spend the night.



*excluding protected areas, military infrastructure
and certain private properties



MORE THAN
350
PLACES TO VISIT

LATVIJAS VALSTS MEŽI
KOKSNE • STĀDI • ATPŪTA



73 %* of latvians visit forests at least once a week. That's good, right?

*SKDS (2023)

LATVIJAS VALSTS MEŽI

KOKSNE · STĀDI · ATPŪTA



LATVIJAS VALSTS MEŽI

KOKSNE · STĀDI · ATPŪTA

Challenges

Misinformation

Myths, prejudices and stereotypes

You can't reach everyone

Protection vs accessibility

Teacher vs System

Workforce

Thank you!

SOME MORE
QUESTIONS?